

Within this leaflet you will be able to find out about the learning adventure that your child will be going on this half term.

As our planning is child centred, driven by their individual interests and next steps, we follow a loosely structured overview plan, the only fixed themes being celebrations, transitional provisions and seasonal interests.

At London Colney, we strive to deliver a personalised, creative and enriched curriculum for your child, whereby they can develop and master a wide range of skills.

We endeavour to provide opportunities for your child to learn in a way that is engaging, purposeful and fun!

We hope your child experiences this on their learning journey this half term and if you have any questions, don't hesitate to ask.

Characterises of Effective Learning

Engagement - Taking a risk, engaging in new experiences, and learning by trial and error.

Motivation - Showing a belief that more effort or a different approach will pay off, and that their skills can grow and develop (growth mind-set).

Thinking creatively and critically: - Planning, making decisions about how to approach a task, solve a problem and reach a goal, while finding new ways to do things .

Key Events this Half Term

1st February

Chinese New Year

2nd February

Celebrating the start of Spring

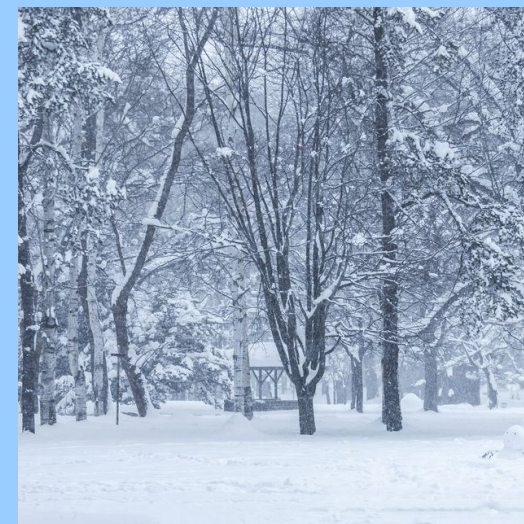
7th - 11th February

Children's mental health week



London Colney Primary and Nursery School

Julia Donaldson class
Learning adventure



Winter

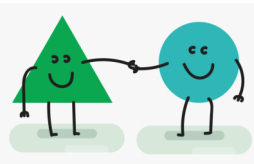
Communication, Language and Understanding

Encouraging listening, talking and re-telling a story through own actions.

Learning new vocabulary and using new words in play, to describe what we have learnt.



Personal, Emotional and Social



development

Discussing the dangers of snow and ice, the importance of keeping warm in winter and children selecting appropriate clothing to wear in the cold weather.

Following our values and programme, linking our to snowflakes and talking about how they are all different .

Expressive Arts and Design

We will be looking at exploring 'cold' colours (blue, silver, white and purple). Learning about Kandinsky's Winter Landscape and using instruments to create different sounds.

Understanding of the World

We will be researching and using the globe to talk about the North and South pole. Whilst looking at book about the Inuit people. We will also be investigating the different aspects of ice.

Literacy

Using their understanding Information from fiction and non-fiction books.

Learning about the sequence of a story and adapting their own story telling.

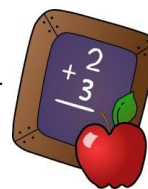
Phonics - Developing letter recognition and sounds.



Mathematics

We will focusing on :

- exploring the 3d shapes and comparing to objects seen everyday.
- Exploring concept of 1 less and 1 more.
- Number recognition and formation.
- Developing subitizing skills
- Developing mathematical languages (half empty , half full).



Physical Education

We will continue to have weekly PE lessons this half term on Thursday or Friday mornings.

Thursday - Reception

Friday - Nursery

We will also have mindful yoga on Fridays.

beActive!